

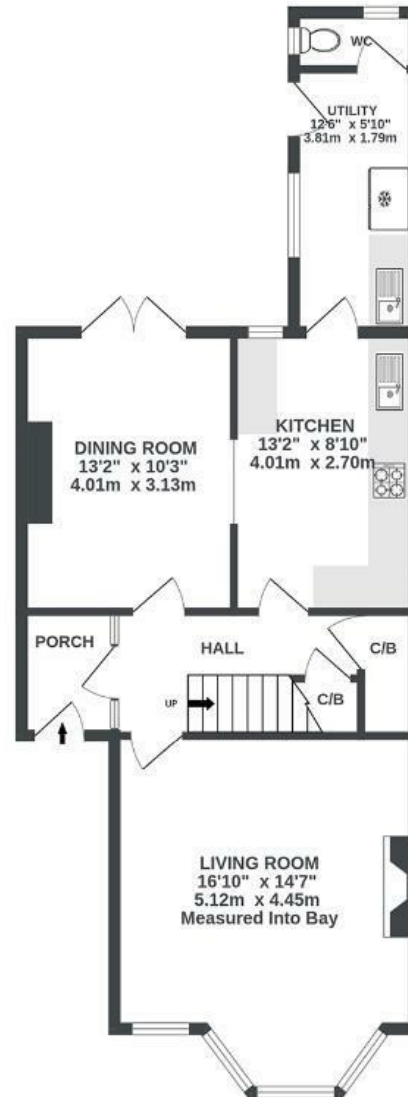
Winchester Road

BRISLINGTON

APPROXIMATE FLOOR AREA
144.1 SQM / 1551 SQFT



GROUND FLOOR
660 sq.ft. (61.3 sq.m.) approx.



1ST FLOOR
598 sq.ft. (55.5 sq.m.) approx.



2ND FLOOR
293 sq.ft. (27.2 sq.m.) approx.



Illustrations are for reference purposes only, measurements are approximate, not to scale.

Boardwalk

Winchester Road , BRISTOL



£550,000



4 Bedrooms



BS4 3NL



3 Bathrooms

" We've loved our spacious home over the last 13 years; winter nights by the open fireplace, watching fireworks from the attic and summer evenings on the decking. "

